

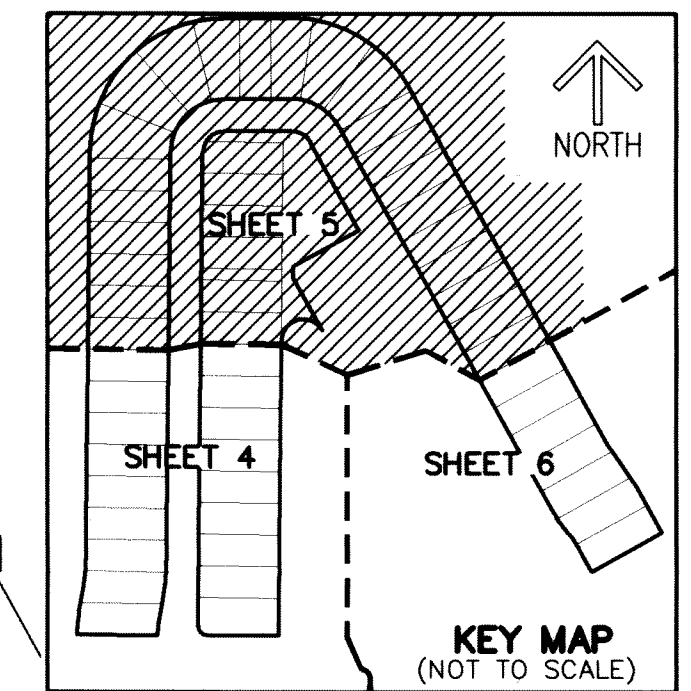
THIS INSTRUMENT PREPARED BY
 DAVID P. LINDLEY
 OF
CAULFIELD & WHEELER, INC.
 SURVEYORS - ENGINEERS - PLANNERS
 7900 GLADES ROAD, SUITE 100
 BOCA RATON, FLORIDA 33434 - (561)392-1991
 CERTIFICATE OF AUTHORIZATION NO. LB3591
 MARCH - 2022

ARTISTRY REPLAT 1

BEING A REPLAT OF LOTS 361 THROUGH 378, 391 THROUGH 437 AND TRACTS O-21 AND O-26, ARTISTRY,
 AS RECORDED IN PLAT BOOK 125, PAGES 26 THROUGH 43 OF THE PUBLIC RECORDS OF PALM BEACH COUNTY, FLORIDA,
 LYING IN SECTION 26, TOWNSHIP 41 SOUTH, RANGE 42 EAST, CITY OF PALM BEACH GARDENS, PALM BEACH COUNTY, FLORIDA.

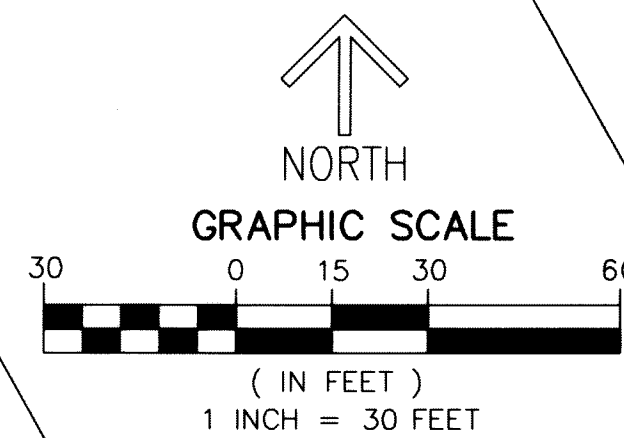
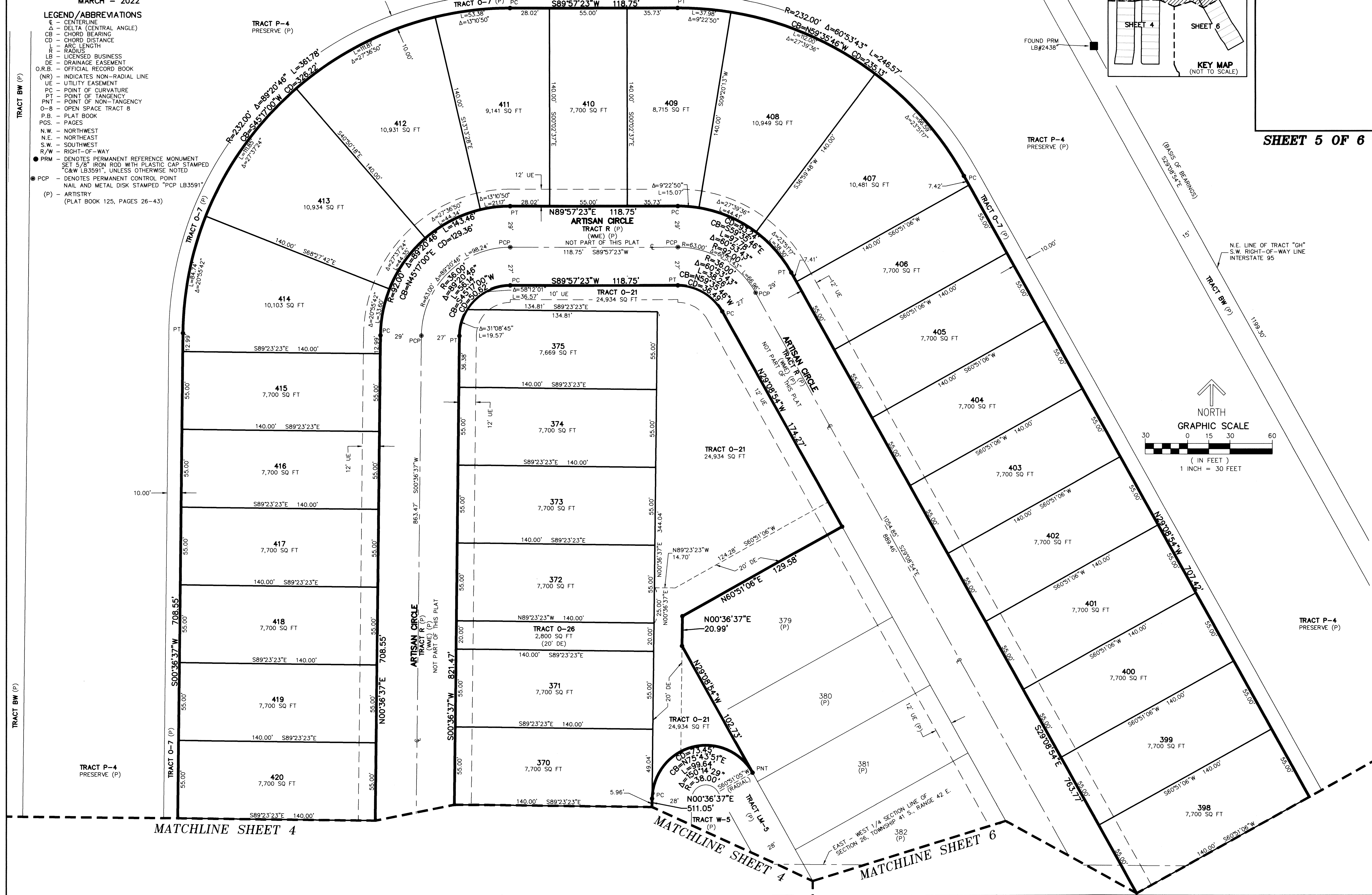
LEGEND/ABBREVIATIONS

- CL - CENTERLINE
- DA - DELTA (CENTRAL ANGLE)
- CB - CHORD BEARING
- CD - CHORD DISTANCE
- L - ARC LENGTH
- R - RADIUS
- LB - LICENSED BUSINESS
- DE - DRAINAGE EASEMENT
- O.R.B. - OFFICIAL RECORD BOOK
- (NR) - INDICATES NON-RADIAL LINE
- UE - UTILITY EASEMENT
- PC - POINT OF CURVATURE
- PT - POINT OF TANGENCY
- PNT - POINT OF NON-TANGENCY
- O-B - OPEN SPACE TRACT B
- P.B. - PLAT BOOK
- PGS. - PAGES
- N.W. - NORTHWEST
- N.E. - NORTHEAST
- S.W. - SOUTHWEST
- R/W - RIGHT-OF-WAY
- PRM - DENOTES PERMANENT REFERENCE MONUMENT SET 5/8" IRON ROD WITH PLASTIC CAP STAMPED "C&W LB3591", UNLESS OTHERWISE NOTED
- PCP - DENOTES PERMANENT CONTROL POINT NAIL AND METAL DISK STAMPED "PCP LB3591"
- (P) - ARTISTRY (PLAT BOOK 125, PAGES 26-43)



31

SHEET 5 OF 6



MATCHLINE SHEET 4

MATCHLINE SHEET 4

MATCHLINE SHEET 6